

- ① STANDARD DC LAMP BLACK CONCRETE WALK
- ② STANDARD DC CONCRETE ROAD *
- ③ STANDARD DC CONCRETE CURB AND GUTTER
- ④ INTERIM GRAVEL PAVEMENT
- ⑤ INTERIM MULTI-USE LAWN
- ⑥ INTERIM SYNTHETIC LAWN
- ⑦ EXISTING CONCRETE PAVING
- ⑧ EXISTING STRUCTURE

NOTE *: 10x16 PANELS W/ "RAKED" FINISH TO MATCH FINISH OF TYP. UNION MARKET PAVEMENT

CONSOLIDATED STAGE ENLARGEMENT PLAN

December 23, 2016



December 23, 2016

INTERIM OPEN SPACE ACTIVATION

L2.06



MARKET TERMINAL - PUD APPLICATION FOR CONSOLIDATED AND FIRST STAGE PUD

OCULUS





INTERIM OPEN SPACE NIGHTTIME EVENTS

December 23, 2016



SCALE: 1/4" = 1'-0"

KEY PLAN



8' FENCE



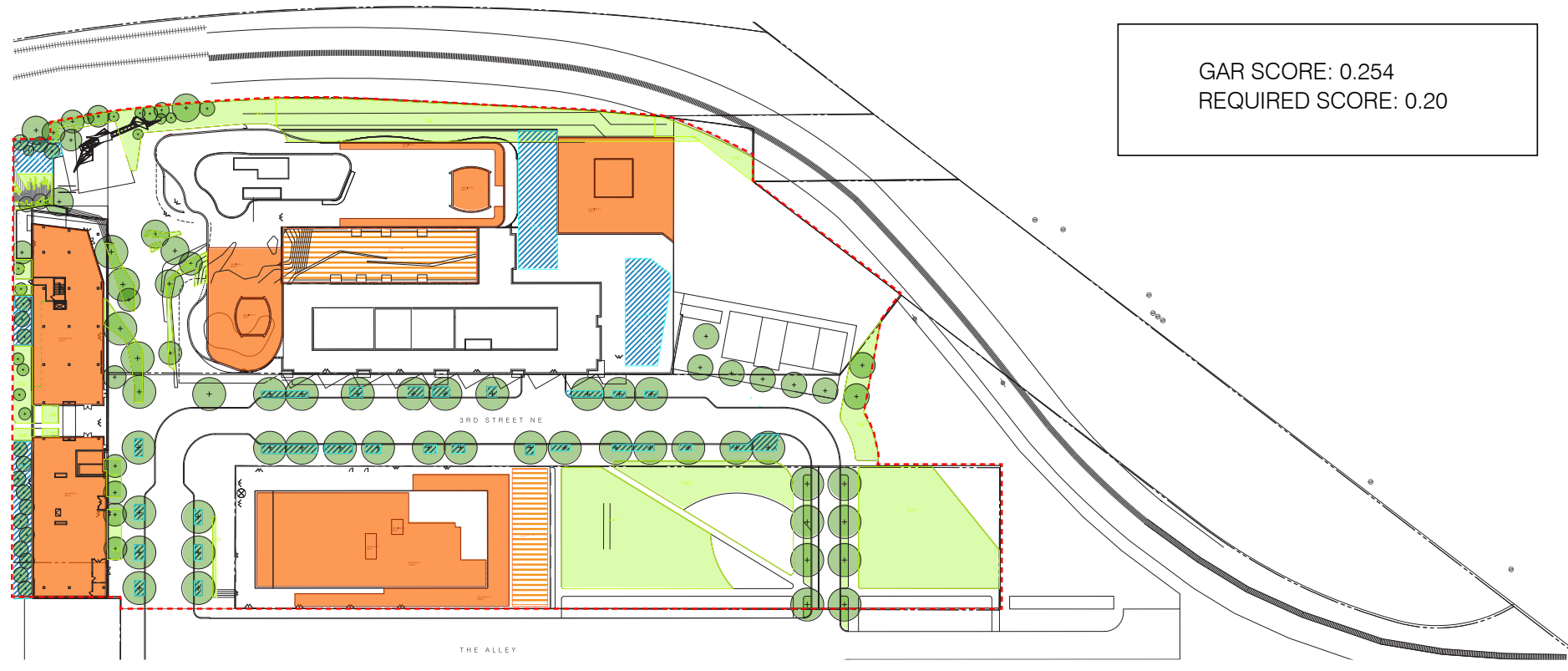
+/- 10' VEGETATED BUFFER

8' FENCE

VRE PROPERTY

December 23, 2016

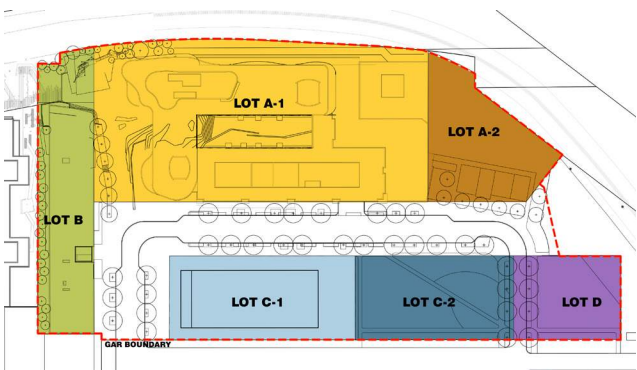
VRE VEGETATED BUFFER



GAR SCORE: 0.254
REQUIRED SCORE: 0.20

GREEN AREA RATIO
267,396 SF

LANDSCAPE ELEMENT	LANDSCAPED AREA WITH A SOIL DEPTH OF 24" OR GREATER	BIO-RETENTION	EXTENSIVE GREEN ROOF LESS THAN 8" OF GROWTH MEDIUM	INTENSIVE GREEN ROOF MORE THAN 8" OF GROWTH MEDIUM	TREE CANOPY (2.5'-6") CALCULATED AT 50 SF/TREE
SQUARE FEET	44,165	12,640	31,155	7,500	5,350 (107 TREES)
NOTES	ASSUME 65% GROUNDCOVER; 35% PLANTS >24" HEIGHT	ASSUME 65% GROUNDCOVER; 35% PLANTS >24" HEIGHT		ASSUME 65% GROUNDCOVER; 35% PLANTS >24" HEIGHT	



Note: GAR calculations demonstrate the ability to meet the GAR requirements based on the overall site area within the GAR boundary. GAR scores for Buildings A-1, A-2, B, C-1, C-2, and D lots may vary individually.

Green Area Ratio Scoresheet				
Ward	Lot	Square	Zoning District	
		enter sq ft of lot		
	267,396	Lot size (enter this value first) *		
		multiplier	SCORE 0.254	
Landscape Elements		Square Feet	Factor	Total
A Landscaped areas (select one of the following for each area)		enter sq ft		
1	Landscaped areas with a soil depth of less than 24"	0	0.3	-
2	Landscaped areas with a soil depth of 24" or greater	44165	0.6	26,499.0
3	Bioretention facilities	12521	0.4	5,008.4
B Plantings (credit for plants in landscaped areas from Section A)		enter sq ft		
1	Groundcovers, or other plants less than 2' tall at maturity	36743	0.2	7,349
		enter number of plants		
2	Plants, not including grasses, 2' or taller at maturity - calculated at 9 sq ft per plant (typically planted no closer than 18" on center)	1,417	12753	3,826
		enter number of trees		
3	Tree canopy for all new trees 2.5" to 6" in diameter or equivalent - calculated at 50 sq ft per tree	107	5350	2,675.0
		enter number of trees		
4	Tree canopy for new trees 6" diameter or larger or equivalent - calculated at 250 sq ft per tree	0	0	-
		enter number of trees		
5	Tree canopy for preservation of existing tree 6" to 12" in diameter or larger or equivalent - calculated at 250 sq ft per tree	0	0	-
		enter number of trees		
6	Tree canopy for preservation of existing tree 12" to 18" in diameter or larger or equivalent - calculated at 600 sq ft per tree	0	0	-
		enter number of trees		
7	Tree canopy for preservation of all existing trees 18" to 24" in diameter or equivalent - calculated at 1300 sq ft per tree	0	0	-
		enter number of trees		
8	Tree canopy for preservation of all existing trees 24" in diameter or larger or equivalent - calculated at 2000 sq ft per tree	0	0	-
		enter sq ft		
9	Vegetated wall, plantings on a vertical surface	0	0.6	-
C Vegetated or "green" roofs		enter sq ft		
1	Over at least 2" and less than 8" of growth medium	31,155	0.6	18,693.0
2	Over at least 8" of growth medium	48,750	0.8	3,900.0
D Permeable Paving***		enter sq ft		
1	Permeable paving over at least 6" and less than 24" of soil or gravel	0	0.4	-
2	Permeable paving over at least 24" of soil or gravel	0	0.5	-
E Other		enter sq ft		
1	Enhanced tree growth systems***	0	0.4	-
2	Renewable energy generation	0	0.5	-
3	Approved water features	0	0.2	-
H Bonuses		sub-total of sq ft = 147,562		
1	Native plant species	0	0.1	-
2	Landscaping in food cultivation	0	0.1	-
3	Harvested stormwater irrigation	0	0.1	-
		Green Area Ratio numerator =		67,950

*** Permeable paving and structural soil together may not qualify for more than one third of the Green Area Ratio score.

CONSOLIDATED STAGE GREEN AREA RATIO CALCULATIONS

December 23, 2016